
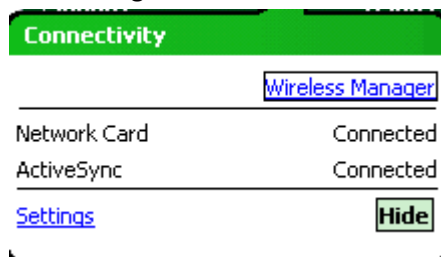


Setting up MC55 on the network then installing BASIS

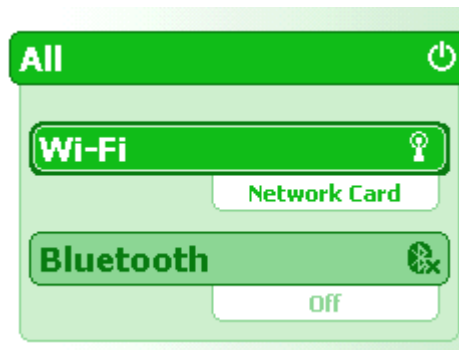
- 1) Turn on the device and make sure it is charged.
 - 2) Start the wireless manager by clicking on the icon 
- From the top of the screen




- 3) The wireless manager will show as:

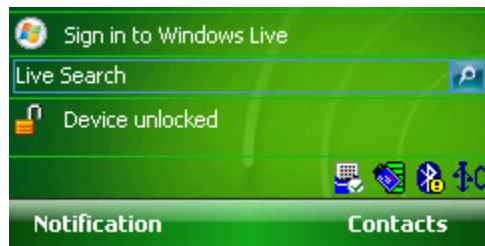


- a. Tap on Wireless Manager to open and make sure WiFi is no off.

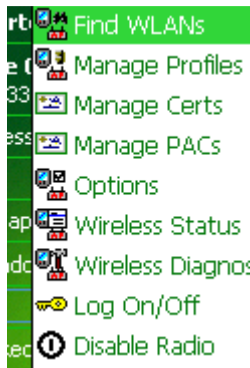


- b. Close when done (click x at the top)

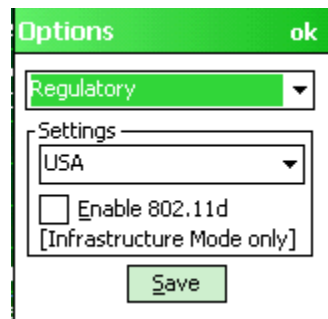
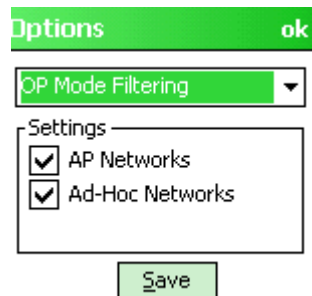
- 4) Once done we can now configure the wireless settings tapping on the wireless icon: 
- a. This icon will show a red x if not connected.

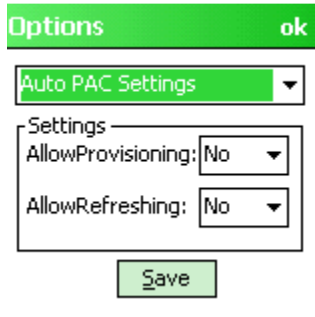
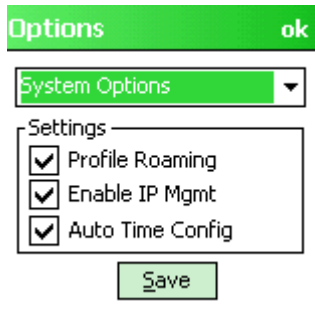


5) From this icon click on Options



6) Then select each option from the drop down menu and make sure they match the ones described below:





The other 2 don't need to change. Click OK when done.

The final step before putting the unit on the wireless network is as follows:

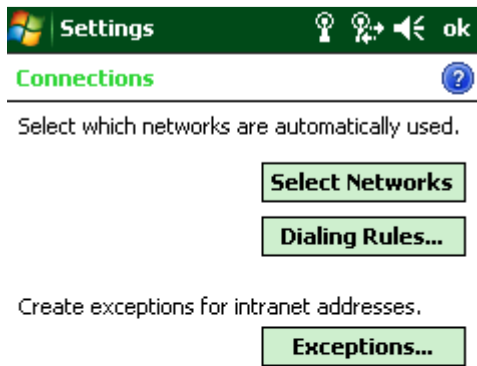
Click on Start then settings:



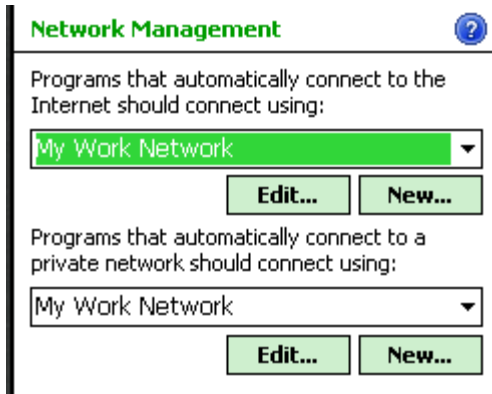
Then connection at the bottom



Then the connection icon at the top and Advanced at the bottom, you should see this screen:



From this screen click on Select network and choose **"My work Network"**




Then click OK at the top.

We are now ready to enter our Wireless settings.

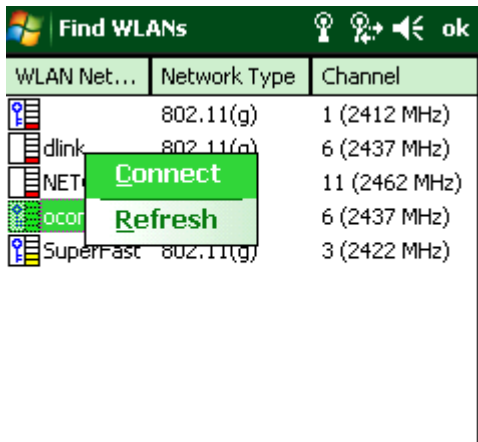
Make sure you know:

Type of encryption

Encryption key

To enter wireless settings click again on the icon 

And select the option to Find WLAN



Click on the appropriate network and select **CONNECT**

If the network is silent (Invisible) click in an empty space and select **ADD**

Profile Name:

ESSID:



Click next

Operating Mode:

Infrastructure

Country:

Allow Any Country

Cancel < Back Next >

Security Mode:

Legacy (Pre-WPA)

Authentication Type:

None

Cancel < Back Next >

Profile Entry

Encryption Type:

Open
Open
WEP-40 (40/24)
WEP-128 (104/24)

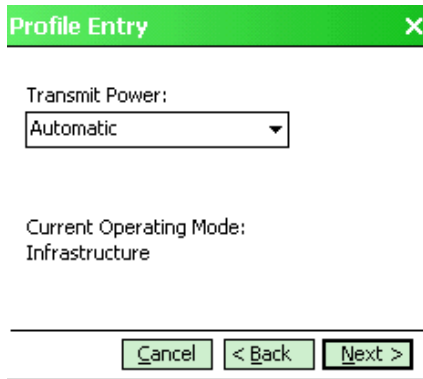
Cancel < Back Next >


Profile Entry

IPv4 Address Type:

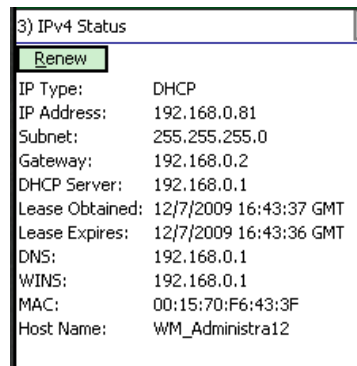
DHCP

Cancel < Back Next >



When this is done the handheld is now ready and the  wireless icon should be green. To verify from the wireless settings select:

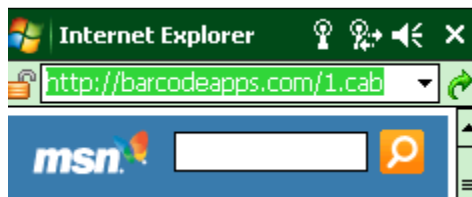
Wireless Status / IP Status and the ipaddress should be populated as such:



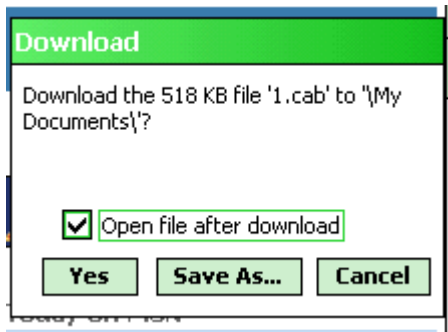
Now the handheld should be on the internet, go to Start Internet explorer and change the address to MSN.com to confirm.

To install BASIS from the internet you must install 5 files:

The address is: <http://barcodeapps.com/1.cab> for the symbol scanning device file

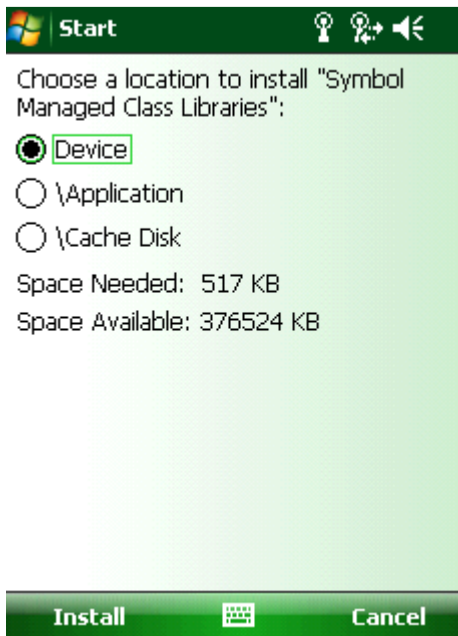


The file will download and do the following prompts:



Select YES

Once downloaded the prompt will be where to install the default DEVICE is desirable, click INSTALL at the bottom to proceed:



Click OK when done and repeat the process for the following files

<http://barcodeapps.com/2.cab>

<http://barcodeapps.com/3.cab>

<http://barcodeapps.com/55.cab>

<http://barcodeapps.com/BT.cab>

Once done the application is now on the handheld we need to enter the settings:

Click Start then BASISNet to enter the application on the device.

Click OK to any prompt

The initial password to enter the today's date as YYYYMD (no zeros in month or days)



Click on Settings then enter all appropriate settings for the

Server IP	192.168.0.80
asis Path	C:\BASIS\BASIS.mde
app Path	C:\Rentals\RentalDB.mdb
BV DSN	BvRexall
orkbook	BvRexallWB
Location	BAS2008
QL Catalog	BasisDataSQL
SQLServer	Servername\SQLEXPRESS
	<input checked="" type="checkbox"/> Use SQL Server
User	Password

Once the settings are entered in order to test the connection return to the main menu and select Data Transfers / From Server/ Click the user and warehouse box and click start at the bottom of the screen.

If the status box at the right says Downloaded then all is ready to go on the handheld.